

**Construction d'un ensemble résidentiel de deux immeubles de logements, commerces, bureaux, parking de 88 places avec aabri PC**  
**Démolition des bâtiments ECA 163 et 377**

**Route du Simplon - 1004 PAUDEX**

**Architecte**  
 Le Doyennet SA - Henri de Govenor - architecte EPFL - SA  
 4, boulevard de Genève - 1700, 1021 010 10 14  
 1004 Lucerne - Email: info@le-doyennet.ch - www.le-doyennet.ch

**Propriétaires** Parcelles 104 et 110  
 Société de gestion  
 Société François Darbo  
 Société Georges Robert

**Propriétaire** Parcelles 102 et 103  
 Commune de Paudex  
 Route de la Dordogne 9  
 1094 Paudex

**Promoteur acquéreur**  
 GC Immobilier Holding SA  
 Ch. de Pully 2 - 1009 Pully

**COTES SAINT MAIRE**

AFFAIRE N° 484  
**Plan N°2000**

MISE À L'ENQUÊTE  
 CAMAC N° 235675

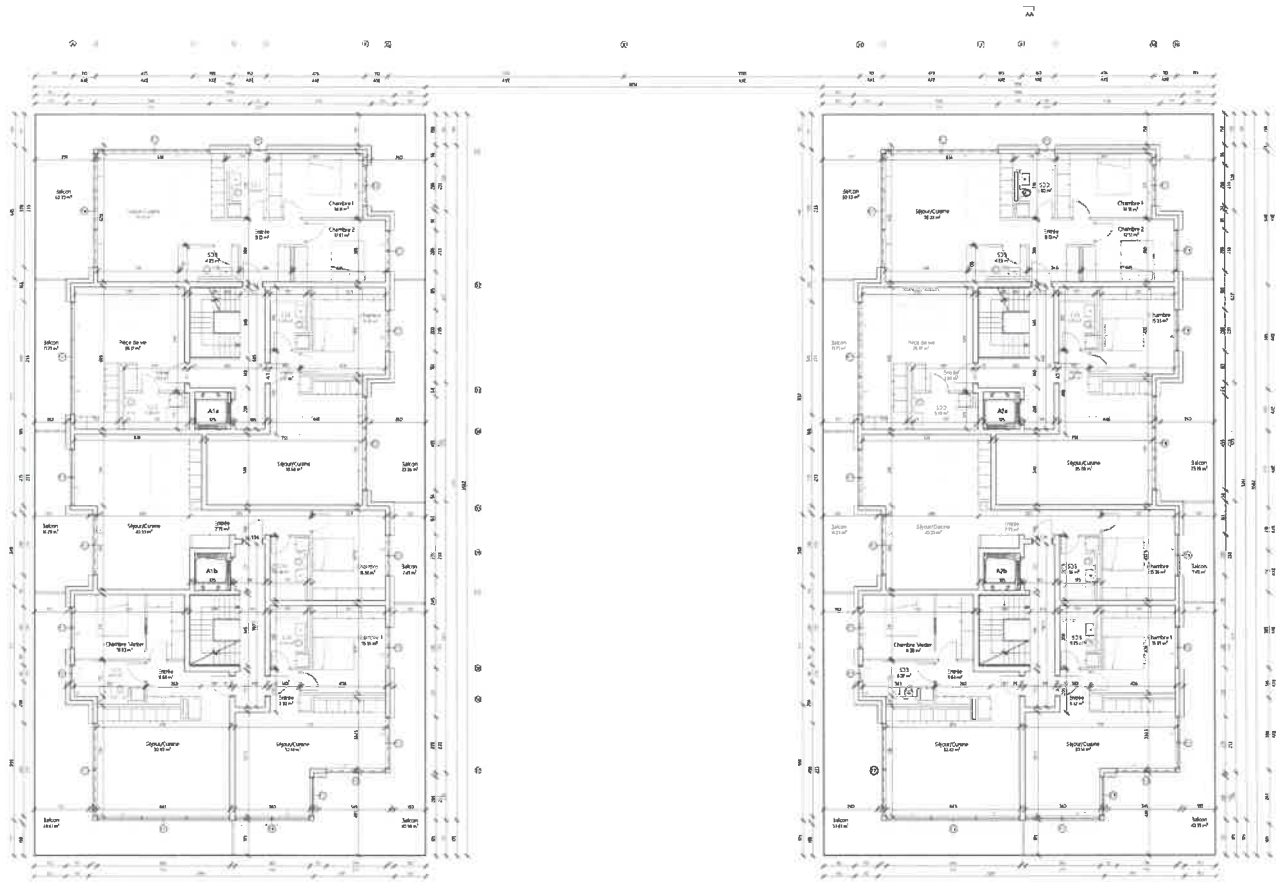
**RDC - Esplanade**

DATE: 25.08.2024

Niveau	DEPART	FIN	DEPART	FIN
R+0	+0.00	+0.00	R+0	+0.00
R+1	+1.20	+1.20	R+1	+1.20
R+2	+2.40	+2.40	R+2	+2.40
R+3	+3.60	+3.60	R+3	+3.60
R+4	+4.80	+4.80	R+4	+4.80
R+5	+6.00	+6.00	R+5	+6.00
R+6	+7.20	+7.20	R+6	+7.20
R+7	+8.40	+8.40	R+7	+8.40
R+8	+9.60	+9.60	R+8	+9.60
R+9	+10.80	+10.80	R+9	+10.80
R+10	+12.00	+12.00	R+10	+12.00
R+11	+13.20	+13.20	R+11	+13.20
R+12	+14.40	+14.40	R+12	+14.40
R+13	+15.60	+15.60	R+13	+15.60
R+14	+16.80	+16.80	R+14	+16.80
R+15	+18.00	+18.00	R+15	+18.00
R+16	+19.20	+19.20	R+16	+19.20
R+17	+20.40	+20.40	R+17	+20.40
R+18	+21.60	+21.60	R+18	+21.60
R+19	+22.80	+22.80	R+19	+22.80
R+20	+24.00	+24.00	R+20	+24.00
R+21	+25.20	+25.20	R+21	+25.20
R+22	+26.40	+26.40	R+22	+26.40
R+23	+27.60	+27.60	R+23	+27.60
R+24	+28.80	+28.80	R+24	+28.80
R+25	+30.00	+30.00	R+25	+30.00
R+26	+31.20	+31.20	R+26	+31.20
R+27	+32.40	+32.40	R+27	+32.40
R+28	+33.60	+33.60	R+28	+33.60
R+29	+34.80	+34.80	R+29	+34.80
R+30	+36.00	+36.00	R+30	+36.00
R+31	+37.20	+37.20	R+31	+37.20
R+32	+38.40	+38.40	R+32	+38.40
R+33	+39.60	+39.60	R+33	+39.60
R+34	+40.80	+40.80	R+34	+40.80
R+35	+42.00	+42.00	R+35	+42.00
R+36	+43.20	+43.20	R+36	+43.20
R+37	+44.40	+44.40	R+37	+44.40
R+38	+45.60	+45.60	R+38	+45.60
R+39	+46.80	+46.80	R+39	+46.80
R+40	+48.00	+48.00	R+40	+48.00
R+41	+49.20	+49.20	R+41	+49.20
R+42	+50.40	+50.40	R+42	+50.40
R+43	+51.60	+51.60	R+43	+51.60
R+44	+52.80	+52.80	R+44	+52.80
R+45	+54.00	+54.00	R+45	+54.00
R+46	+55.20	+55.20	R+46	+55.20
R+47	+56.40	+56.40	R+47	+56.40
R+48	+57.60	+57.60	R+48	+57.60
R+49	+58.80	+58.80	R+49	+58.80
R+50	+60.00	+60.00	R+50	+60.00
R+51	+61.20	+61.20	R+51	+61.20
R+52	+62.40	+62.40	R+52	+62.40
R+53	+63.60	+63.60	R+53	+63.60
R+54	+64.80	+64.80	R+54	+64.80
R+55	+66.00	+66.00	R+55	+66.00
R+56	+67.20	+67.20	R+56	+67.20
R+57	+68.40	+68.40	R+57	+68.40
R+58	+69.60	+69.60	R+58	+69.60
R+59	+70.80	+70.80	R+59	+70.80
R+60	+72.00	+72.00	R+60	+72.00
R+61	+73.20	+73.20	R+61	+73.20
R+62	+74.40	+74.40	R+62	+74.40
R+63	+75.60	+75.60	R+63	+75.60
R+64	+76.80	+76.80	R+64	+76.80
R+65	+78.00	+78.00	R+65	+78.00
R+66	+79.20	+79.20	R+66	+79.20
R+67	+80.40	+80.40	R+67	+80.40
R+68	+81.60	+81.60	R+68	+81.60
R+69	+82.80	+82.80	R+69	+82.80
R+70	+84.00	+84.00	R+70	+84.00
R+71	+85.20	+85.20	R+71	+85.20
R+72	+86.40	+86.40	R+72	+86.40
R+73	+87.60	+87.60	R+73	+87.60
R+74	+88.80	+88.80	R+74	+88.80
R+75	+90.00	+90.00	R+75	+90.00
R+76	+91.20	+91.20	R+76	+91.20
R+77	+92.40	+92.40	R+77	+92.40
R+78	+93.60	+93.60	R+78	+93.60
R+79	+94.80	+94.80	R+79	+94.80
R+80	+96.00	+96.00	R+80	+96.00
R+81	+97.20	+97.20	R+81	+97.20
R+82	+98.40	+98.40	R+82	+98.40
R+83	+99.60	+99.60	R+83	+99.60
R+84	+100.80	+100.80	R+84	+100.80
R+85	+102.00	+102.00	R+85	+102.00
R+86	+103.20	+103.20	R+86	+103.20
R+87	+104.40	+104.40	R+87	+104.40
R+88	+105.60	+105.60	R+88	+105.60
R+89	+106.80	+106.80	R+89	+106.80
R+90	+108.00	+108.00	R+90	+108.00
R+91	+109.20	+109.20	R+91	+109.20
R+92	+110.40	+110.40	R+92	+110.40
R+93	+111.60	+111.60	R+93	+111.60
R+94	+112.80	+112.80	R+94	+112.80
R+95	+114.00	+114.00	R+95	+114.00
R+96	+115.20	+115.20	R+96	+115.20
R+97	+116.40	+116.40	R+97	+116.40
R+98	+117.60	+117.60	R+98	+117.60
R+99	+118.80	+118.80	R+99	+118.80
R+100	+120.00	+120.00	R+100	+120.00

Scale: 1:100





Construction d'un ensemble résidentiel de deux immeubles de logements, commences, bureaux, parking de 88 places avec abri PC  
 Démolition des bâtiments ECA 163 et 377  
 Route du Sillion -1094 PAUDEX

**Architecte**  
 AG GOSWAMI SA - Hôtel de Commerce - architectes EPFL - SA  
 8, boulevard de grancy - TEL: 021 618 05 14  
 1009 Lausanne - Email: info@aggoswami.ch - www.aggoswami.ch

**Propriétaires** Parcelles 104 et 110  
 Cronos André deuter  
 Cronos Françoise Cedes  
 Cronos Georges Robert

**Propriétaire** Parcelles 102 et DP12  
 Commune de Paudex  
 Route de la Bordelette 6  
 1094 Paudex

**Promettant acquéreur**  
 OC Immobilier Holding SA  
 Ch. du Paillet 4 - 1009 Pully

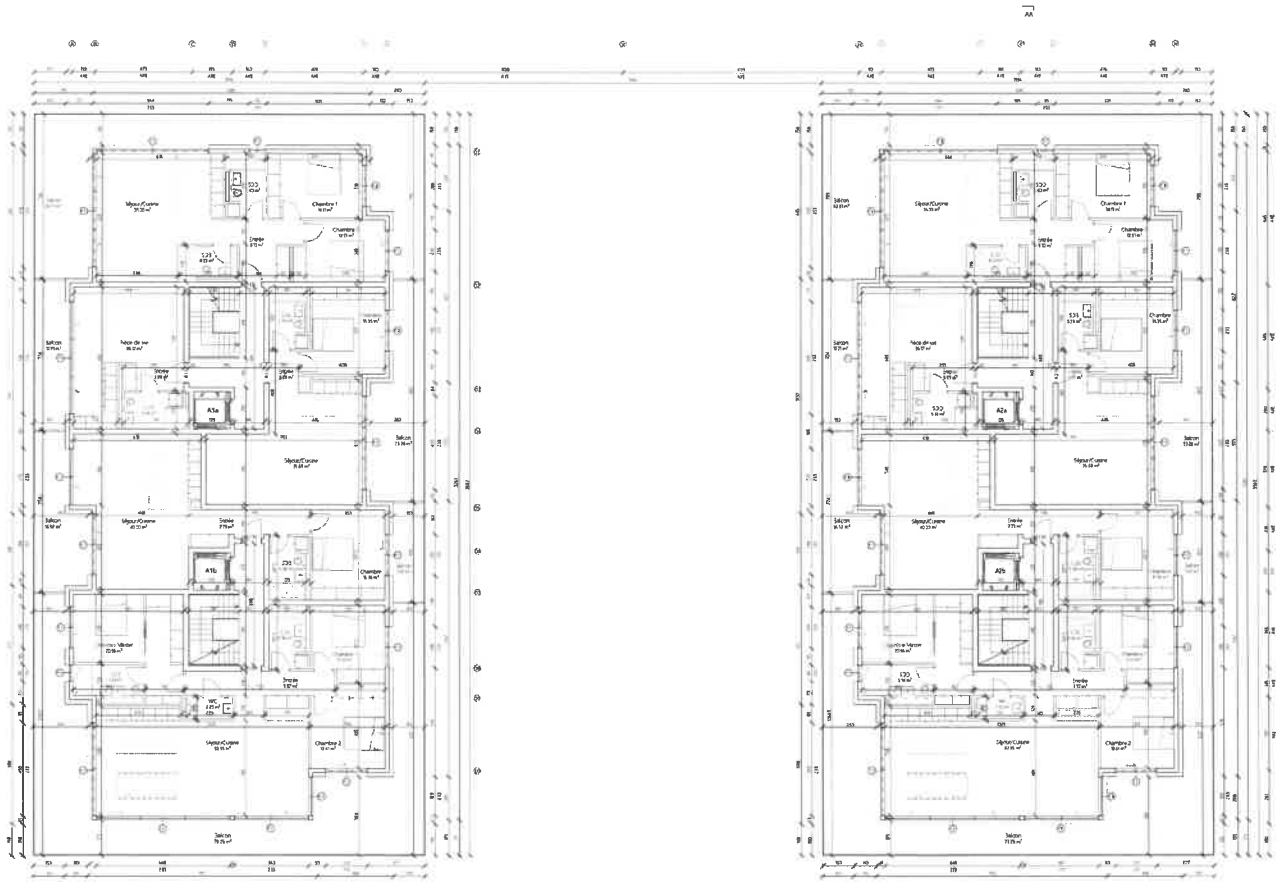
**COTES SAINT MAIRE**  
 AFFAIRE N° 451  
 Plan N°2002

**MISE À L'ENQUÊTE**  
 CAMAC N° 235675

**2ème Etage**  
 DATE: 08.10.2004

INDICATIONS	COORDONATEUR	LOG
INFOS:	DESIGNATEUR	1:100
DALLE TOTALE	+0.00m	+11.30
R+0	+0.00m	+11.57
R+1	+0.00m	+11.58
R+2	+0.00m	+12.20
R+3	+0.00m	+12.20
R+4	+0.00m	+12.20
R+5	+0.00m	+12.20
R+6	+0.00m	+12.20
R+7	+0.00m	+12.20
R+8	+0.00m	+12.20
R+9	+0.00m	+12.20
R+10	+0.00m	+12.20
R+11	+0.00m	+12.20
R+12	+0.00m	+12.20
R+13	+0.00m	+12.20
R+14	+0.00m	+12.20
R+15	+0.00m	+12.20
R+16	+0.00m	+12.20
R+17	+0.00m	+12.20
R+18	+0.00m	+12.20
R+19	+0.00m	+12.20
R+20	+0.00m	+12.20
R+21	+0.00m	+12.20
R+22	+0.00m	+12.20
R+23	+0.00m	+12.20
R+24	+0.00m	+12.20
R+25	+0.00m	+12.20
R+26	+0.00m	+12.20
R+27	+0.00m	+12.20
R+28	+0.00m	+12.20
R+29	+0.00m	+12.20
R+30	+0.00m	+12.20
R+31	+0.00m	+12.20
R+32	+0.00m	+12.20
R+33	+0.00m	+12.20
R+34	+0.00m	+12.20
R+35	+0.00m	+12.20
R+36	+0.00m	+12.20
R+37	+0.00m	+12.20
R+38	+0.00m	+12.20
R+39	+0.00m	+12.20
R+40	+0.00m	+12.20
R+41	+0.00m	+12.20
R+42	+0.00m	+12.20
R+43	+0.00m	+12.20
R+44	+0.00m	+12.20
R+45	+0.00m	+12.20
R+46	+0.00m	+12.20
R+47	+0.00m	+12.20
R+48	+0.00m	+12.20
R+49	+0.00m	+12.20
R+50	+0.00m	+12.20
R+51	+0.00m	+12.20
R+52	+0.00m	+12.20
R+53	+0.00m	+12.20
R+54	+0.00m	+12.20
R+55	+0.00m	+12.20
R+56	+0.00m	+12.20
R+57	+0.00m	+12.20
R+58	+0.00m	+12.20
R+59	+0.00m	+12.20
R+60	+0.00m	+12.20
R+61	+0.00m	+12.20
R+62	+0.00m	+12.20
R+63	+0.00m	+12.20
R+64	+0.00m	+12.20
R+65	+0.00m	+12.20
R+66	+0.00m	+12.20
R+67	+0.00m	+12.20
R+68	+0.00m	+12.20
R+69	+0.00m	+12.20
R+70	+0.00m	+12.20
R+71	+0.00m	+12.20
R+72	+0.00m	+12.20
R+73	+0.00m	+12.20
R+74	+0.00m	+12.20
R+75	+0.00m	+12.20
R+76	+0.00m	+12.20
R+77	+0.00m	+12.20
R+78	+0.00m	+12.20
R+79	+0.00m	+12.20
R+80	+0.00m	+12.20
R+81	+0.00m	+12.20
R+82	+0.00m	+12.20
R+83	+0.00m	+12.20
R+84	+0.00m	+12.20
R+85	+0.00m	+12.20
R+86	+0.00m	+12.20
R+87	+0.00m	+12.20
R+88	+0.00m	+12.20
R+89	+0.00m	+12.20
R+90	+0.00m	+12.20
R+91	+0.00m	+12.20
R+92	+0.00m	+12.20
R+93	+0.00m	+12.20
R+94	+0.00m	+12.20
R+95	+0.00m	+12.20
R+96	+0.00m	+12.20
R+97	+0.00m	+12.20
R+98	+0.00m	+12.20
R+99	+0.00m	+12.20
R+100	+0.00m	+12.20



Construction d'un ensemble résidentiel de deux immeubles de logements, commerces, bureaux, parking de 89 places avec abri PC  
 Démolition des bâtiments ECA 163 et 377  
 Route du Simplon -1084 PAUDEX

**Architecte**  
 de Dierckx SA - Home de Stouvenel - architecte EPFL - SA  
 8, Boulevard de Genève TEL: 021 619 32 14  
 1008 Lausanne Email: s.d@diereckx.ch www.diereckx.ch

**Propriétaires** Parcelles 104 et 110  
 Christian André Jaquet  
 Christiane Françoise Dupuis  
 Christian Georges Robert

**Propriétaire** Parcelles 102 et 103  
 Commune de Paudex  
 Route de la Bordelette 6  
 1084 Paudex

**Promettant acquéreur**  
 CD Immobilien Holding SA  
 Ch. de Pully 4 - 1009 Pully

**COTES SAINT MAIRE**  
 AFFAIRE N° 481  
 Plan N°2003

MISE À L'ENQUÊTE  
 CAMAC N° 235675

DATE: 26.12.2014

NOUVEAUX	DESSINATEUR	MS
DATE PROJET	10.08.14	
R+0	+10.00m + 111.67	
R+1	+10.00m + 112.00	
R+2	+10.00m + 112.00	
R+3	+10.00m + 112.00	
R+4	+10.00m + 112.00	
R+5	+10.00m + 112.00	
R+6	+10.00m + 112.00	
R+7	+10.00m + 112.00	
R+8	+10.00m + 112.00	
R+9	+10.00m + 112.00	
R+10	+10.00m + 112.00	
R+11	+10.00m + 112.00	
R+12	+10.00m + 112.00	
R+13	+10.00m + 112.00	
R+14	+10.00m + 112.00	
R+15	+10.00m + 112.00	
R+16	+10.00m + 112.00	
R+17	+10.00m + 112.00	
R+18	+10.00m + 112.00	
R+19	+10.00m + 112.00	
R+20	+10.00m + 112.00	
R+21	+10.00m + 112.00	
R+22	+10.00m + 112.00	
R+23	+10.00m + 112.00	
R+24	+10.00m + 112.00	
R+25	+10.00m + 112.00	
R+26	+10.00m + 112.00	
R+27	+10.00m + 112.00	
R+28	+10.00m + 112.00	
R+29	+10.00m + 112.00	
R+30	+10.00m + 112.00	
R+31	+10.00m + 112.00	
R+32	+10.00m + 112.00	
R+33	+10.00m + 112.00	
R+34	+10.00m + 112.00	
R+35	+10.00m + 112.00	
R+36	+10.00m + 112.00	
R+37	+10.00m + 112.00	
R+38	+10.00m + 112.00	
R+39	+10.00m + 112.00	
R+40	+10.00m + 112.00	
R+41	+10.00m + 112.00	
R+42	+10.00m + 112.00	
R+43	+10.00m + 112.00	
R+44	+10.00m + 112.00	
R+45	+10.00m + 112.00	
R+46	+10.00m + 112.00	
R+47	+10.00m + 112.00	
R+48	+10.00m + 112.00	
R+49	+10.00m + 112.00	
R+50	+10.00m + 112.00	
R+51	+10.00m + 112.00	
R+52	+10.00m + 112.00	
R+53	+10.00m + 112.00	
R+54	+10.00m + 112.00	
R+55	+10.00m + 112.00	
R+56	+10.00m + 112.00	
R+57	+10.00m + 112.00	
R+58	+10.00m + 112.00	
R+59	+10.00m + 112.00	
R+60	+10.00m + 112.00	
R+61	+10.00m + 112.00	
R+62	+10.00m + 112.00	
R+63	+10.00m + 112.00	
R+64	+10.00m + 112.00	
R+65	+10.00m + 112.00	
R+66	+10.00m + 112.00	
R+67	+10.00m + 112.00	
R+68	+10.00m + 112.00	
R+69	+10.00m + 112.00	
R+70	+10.00m + 112.00	
R+71	+10.00m + 112.00	
R+72	+10.00m + 112.00	
R+73	+10.00m + 112.00	
R+74	+10.00m + 112.00	
R+75	+10.00m + 112.00	
R+76	+10.00m + 112.00	
R+77	+10.00m + 112.00	
R+78	+10.00m + 112.00	
R+79	+10.00m + 112.00	
R+80	+10.00m + 112.00	
R+81	+10.00m + 112.00	
R+82	+10.00m + 112.00	
R+83	+10.00m + 112.00	
R+84	+10.00m + 112.00	
R+85	+10.00m + 112.00	
R+86	+10.00m + 112.00	
R+87	+10.00m + 112.00	
R+88	+10.00m + 112.00	
R+89	+10.00m + 112.00	
R+90	+10.00m + 112.00	
R+91	+10.00m + 112.00	
R+92	+10.00m + 112.00	
R+93	+10.00m + 112.00	
R+94	+10.00m + 112.00	
R+95	+10.00m + 112.00	
R+96	+10.00m + 112.00	
R+97	+10.00m + 112.00	
R+98	+10.00m + 112.00	
R+99	+10.00m + 112.00	
R+100	+10.00m + 112.00	

ESCALE: 1:100





